



Delft University of Technology
Parallel and Distributed Systems Report Series

**User Behavior, Social Networking, and Playing Style in
Online and Face to Face Bridge Communities**

Mihaela Balint, Vlad Posea, Alexandru Dimitriu, and Alexandru Iosup
Mihaela.Balint@cs.pub.ro, Vlad.Posea@cs.pub.ro, A.Iosup@tudelft.nl

Completed July 2010.
Short paper in NetGames 2010.

report number PDS-2010-008



ISSN 1387-2109

Published and produced by:
Parallel and Distributed Systems Section
Faculty of Information Technology and Systems Department of Technical Mathematics and Informatics
Delft University of Technology
Zuidplantsoen 4
2628 BZ Delft
The Netherlands

Information about Parallel and Distributed Systems Report Series:
reports@pds.twi.tudelft.nl

Information about Parallel and Distributed Systems Section:
<http://pds.twi.tudelft.nl/>

© 2010 Parallel and Distributed Systems Section, Faculty of Information Technology and Systems, Department of Technical Mathematics and Informatics, Delft University of Technology. All rights reserved. No part of this series may be reproduced in any form or by any means without prior written permission of the publisher.





Abstract

Online social games are Internet-based games that use the social networks formed by players to extend in-game functionality. For example, gamers participating in the BBO Fans community combine online bridge play with social networking. Despite an increase in online social gaming's popularity—currently, there exist over one million online bridge players—, and of decades of research on social networks, the activity characteristics and the community structure of online social gaming remain relatively unknown. In this work we investigate and contrast these aspects for two bridge communities, BBO Fans (online) and Locomotiva (face to face). We propose the use of playing relationships instead of traditional social relationships such as friends and friends-of-friends. Using long-term, large-scale data we have collected from both the online and face to face bridge communities, we analyze user behavior, social network structure, and playing style in bridge communities. We find many similar characteristics in the two studied communities. Surprisingly, we also find more variation in the activity levels and fewer stable partnerships for the face to face bridge community.



Contents

1	Introduction	4
2	Background on Bridge	4
3	Bridge Community Datasets	5
3.1	Locomotiva: A Face to Face Bridge Club	5
3.2	BBO Fans: An Online Bridge Club	5
4	Method of Analysis	6
4.1	User Behavior	6
4.2	Social Gaming	7
4.3	Playing Style	7
5	Analysis Results	8
5.1	Activity Levels	8
5.2	Community Structure	9
5.3	Playing Styles	11
6	Related Work	11
7	Conclusion and Ongoing Work	12



List of Figures

1	Daily number of players for Locomotiva	8
2	Weekly activity for Locomotiva and BBO	9
3	Network traffic for BBO	10
4	Partial Locomotiva graph showing one identified community (anonymized).	11
5	Playing style for Locomotiva and BBO	11

List of Tables

1	Trace characteristics	5
2	Community characteristics in the Locomotiva Bridge Club	10

1 Introduction

Traditional games have recently started to become online social games. Once accessible only through face to face encounters or slow mail exchanges, games such as bridge, chess, and go are now played online by millions of gamers. Other online social games, such as FarmVille and Cafe World, already exploit the characteristics of the social network formed by gamers to improve and grow the online communities. For example, FarmVille routinely gives high-level (expert) players new items and broadcasts gameplay achievements through the social links. User behavior, social network, and play style analysis are not new research topics [6, 5, 1, 4], but the study of online social gaming communities provides a new domain of application with the potential to influence millions of lives. In this work we analyze and compare two communities of bridge players, Locomotiva and BBO Fans.

The online social games that extend traditional games may add new dimensions to existing studies of user behavior, social networking, and play style: the presence of a “ground truth”, the presence of a teacher-student relation, an adversarial context, etc. The “ground truth” can be obtained from the smaller, face to face game communities, which can be analyzed in detail [13, 14] and for which expert confirmation of the findings is usually available. For many gaming clubs, a select few of the more experienced players have the role of attracting and teaching new players. Gaming may add an adversarial context to the formation of the social network, whereas many other social networks are based on cooperation and friendship among participants. Thus, studies on online social gaming complement many of the earlier studies on player activity and behavior [1, 4] and social networks [10, 9]. A few recent studies have focused on online social gaming, analyzing the community behavior emerging in the Massively Multiplayer Role-Playing Game World of Warcraft [3] or the friendship relations for the casual online social game Fighters Club [12]. However, the previous online social network and social gaming studies rely on networks in which links are precisely specified before the networks are observed. In contrast, in this work we set to investigate a community of online bridge players, where social relationships between the players are established and strengthened by every game session. Our main research question is *What are the unique characteristics of an online bridge community?* To answer this question, we investigate the characteristics of two bridge communities, one face to face (Locomotiva) and one online (BBO Fans), with a threefold contribution:

1. We collect two long-term bridge community datasets (Section 3). This extends our previous work [15]¹ with another long-term dataset, which can also be used as “ground truth” for our algorithmic findings;
2. We propose a method for analyzing user behavior, social networking, and playing style in online and face to face bridge communities (Section 4). We extend our previous work [15] primarily with a formalism for social connectivity based on playing relationships;
3. We demonstrate the use of the proposed method by analyzing two popular and active bridge communities, the BBO Fans online bridge community and the Locomotiva face to face bridge community (Section 5).

2 Background on Bridge

Bridge is a popular game for groups of four people playing in pairs. Bridge was the only team game at the last World Mind Sports Games (Beijing, 2008), which motivates making bridge our focus. Specifically, we are interested in duplicate bridge, where the same distribution of cards is played at several tables and the winner is decided by comparing the results at each table. Competing only against players with identical cards is meant to reduce the luck factor and enhance the skill factor in winning.

A single game is called in bridge a *hand*. A bridge hand lasts for 6-8 minutes, enough time for the players to bid, play, and comment on the hand. In the bidding phase, players take turns in specifying a number of tricks and a trump suit (i.e., “1 club” bids the taking of 7 out of 13 tricks, where club is the trump suit). The bidding mechanism allows any bid to be overridden with a higher bid by any of the players next in turn. This makes it possible for partners to assign arbitrary, conventional meanings to bids. The bidding is followed

¹Note: we have made available online a copy of article [15], at http://pds.twi.tudelft.nl/~iosup/BBOFans-socgam10roedunet_cr.pdf.

Table 1: The bridge community datasets.

Characteristic	Locomotiva	BBO	BBO Fans
Period	Jan 1–Dec 31, 2009	Sep 5–Oct 15, 2009	
Players	275	142,401	8,609
Hands	28,756	3,115,536	565,799

by the play of the hand, where the side who bid highest tries to win as many tricks as possible with the specified suit as trump. In the play, the partners may exchange information through the cards they choose to play, which have a pre-established, conventional significance. The rules of the game encourage even the weakest pairs to have many conventional agreements subject to continuous refinement often acquired over a long-term, social relationship.

There are two types of bridge games, the pairs game and the team game. In a pairs game, each hand is played at a number of tables; after the play all the recorded scores are compared. A pairs game can be run as a tournament or as casual club play. In tournaments, all pairs play a fixed number of hands, which makes it possible to determine a winner fairly. In casual club play, gamers can play for as long as they want, but the result of each player will be obtained by comparing only on the hands of that player with the restricted set of players who happened to play the same hand. In casual club play, only individual scores are assigned and no ranking is determined. A team game takes place at exactly two tables. Each team is represented by two pairs, one seated at each table. In team games, each hand’s result is only compared to the result at the other table; the winner is determined by adding up the results of all comparisons.

Bridge player communities are often organized in (local) clubs where players meet and play face to face in a relaxed and friendly environment. Such clubs have fixed schedules and are not easily reachable by everybody; as a result, club activity rarely amounts to over 15 hours/week. Many bridge players have (also) joined online bridge communities such as Bridge Base Online and Yahoo Bridge (free play sites), and OKBridge and Swan Games (subscription sites).

3 Bridge Community Datasets

We have collected two datasets, each corresponding to the long-term operation of a large bridge community. Specifically, we have collected information about one face to face bridge community, Locomotiva, and one online community, BBO Fans. The BBO Fans community uses the services of a general online bridge platform, BBO, through which they may play bridge with non-BBO Fans members. We explain in the remainder of this section, in turn, the characteristics of each community; Table 1 summarizes the properties of the collected datasets.

3.1 Locomotiva: A Face to Face Bridge Club

Locomotiva is a traditional bridge club located in the center of Bucharest. The club’s activity involves 4 tournaments per week and around 15 bigger events per year. A regular club tournament gathers 20-60 people who spend 4 hours together. The club is equipped with a wireless scoring system, which provides real-time results to a tournament management software; consequently, the final results are available immediately after the end of the session. Our expert knowledge about the organization and personal relationships in this community make it an ideal study item, and a good “ground truth” for the analysis method we introduce in Section 4. We have collected from Locomotiva one full year of tournament records, between Jan 1 and Dec 31, 2009.

3.2 BBO Fans: An Online Bridge Club

We also focus in this work on Bridge Base Online (BBO), which is one the most popular free platforms for online bridge. BBO attracts many professional and world-class players, and a large and active community

of over 200,000 players. BBO users can play casually, in pairs tournaments, or in team matches. They can also watch live broadcasts of important events or regular games between other users.

BBO has some built-in support for connecting its members: players can organize in public or private clubs, manage lists of friends and enemies, and search for other players by features such as nationality and skill. However, the links created through these lists are not publicly available, so players do not benefit from the formation of social networks, for example through friends-of-friends exchanges. In lack of social incentives, quitters and cheaters (players can use instant messaging to pass unauthorized information to each other) can still ruin the gameplay experience of BBO players. To cope with this situation, groups of players have started to organize into online bridge clubs that function as social networks and use the BBO platform only to play.

We focus in this work on the BBO players that are also members of the BBO Fans community, which is a large online bridge community (club) based on the BBO platform. This club offers to its over 8,000 registered members 6 daily tournaments (3 individual and 3 for pairs of members), directed by volunteers who are members of the club. Unlike other player-created clubs, BBO Fans accepts members of all nationalities and skill level. BBO Fans exploits many of the features that BBO is offering for community building. The mechanism of individual tournaments requires each player to play 1-2 hands with each of 4-8 different random partners; having 3 such tournaments daily should facilitate the development of a community inside the bridge club. The players get acquainted during individual tournaments and may consequently register as partners in pairs tournaments. Membership is free, which may attract gamers that play for relaxation after work hours; such players may not be interested in participating regularly in club tournaments, and may not be willing to form long-term partnerships.

We have collected data for the BBO Fans community and their games played through the BBO platform for 40 full days, from September 5 to October 14, 2009. Our data collection comprises two steps; for details we refer to our previous work [15]. First, we collect a complete list of players from the official community website. The list includes the BBO user name, which holds for many other BBO-based communities and is motivated by the strong incentive of community administrators to facilitate member discovery and inter-member contacts. Second, we collect the hand records for each BBO Fans player using the BBO Web 2.0 API for direct access to player records.

4 Method of Analysis

In this section we present our method for analyzing bridge communities. The main challenge is building the social graph of the BBO Fans community, for which we do not have social relationship or “ground truth” information.

4.1 User Behavior

We investigate two aspects of user behavior, temporal and quantitative. The temporal aspect refers to the presence of players in the online social game. We analyze the *number of daily active users*, as an indicator of social network persistence, and the *number of weekly player joins*, as an indicator of social network growth. The number of daily active users can be used to compare face to face and online (bridge) communities, and is commonly used in system design and resource provisioning for massive online systems [12]. We define the join of a player as the first moment when the player is observed in the collected data. We account the joins over weekly intervals because face to face bridge communities often schedule different types of tournaments over the course of each week; new players may participate first in the tournaments that suit their interests.

The quantitative aspect refers to the contribution to the game of and the resource consumption incurred by players, while being present in the system. We analyze here the *number of hands played* over daily and weekly periods, as an indicator of contribution, and the *network traffic*, as an indicator of consumption. We characterize the network traffic of the game client through an aggregate of the inbound and outbound bandwidth and packets. While the network traffic may be analyzed in greater detail [1, 4, 7], and both for the client and the server [4], our characterization can give a first-order estimate of the resource-related challenges raised by online bridge.

4.2 Social Gaming

Friendship-based social networks have been modeled often as undirected graphs [6, 16]. Similarly, we model online bridge communities as general undirected graphs $G = (V, E)$, where V is the set of nodes (bridge players) and E is the set of edges. But *what is an edge in this graph?* The edges should represent social relations, together forming a symmetric and transitive relationship. Thus, the question becomes *what is a social relation in a bridge community?* We can consider that two bridge players have a social relation if they relate strongly through play: they have met online, have played as partners and/or opponents a number of hands (aspect P in our formalism), or have played in a number of sessions together as partners and/or opponents (S). We have previously [15] investigated this play-related relationship concept, but using only the “number of hands played together” as an indicator of social relationship. One of the main contributions of this work is extending this investigation with (many) other types of playing relationships. We also consider in this work that playing relationships are cooperative (P_+, S_+) or adversarial (P_-, S_-), and consider not only single-aspect but also multi-aspect criteria (such as “ $(P_+ \geq 24) \text{ AND } (S_+ \geq 3) \text{ OR } ((P_- \geq 48) \text{ AND } (S_- \geq 5))$ ”).

Our method generates, for each play relationship criterion specified by the analyst, the graph $G' = (V, E')$, where V is the original set of bridge players, but E' is the set of edges $e = (u, v)$ for which the criterion is satisfied for the players u and v . For the multi-aspect criterion example presented earlier in this section, E' would contain edges between each pair of players that have played together at least 24 hands in at least 3 sessions, or have played as opponents at least 48 hands in at least 5 sessions.

Our method extracts next the distinct communities from each generated graph G' using a greedy algorithm [2] that maximizes the modularity of the graph, where modularity quantifies the quality of a division of a social network in communities. The modularity of a division of a graph’s nodes into groups is the fraction of the graph’s edges occurring only within the groups, from which the expected fraction if edges were distributed uniformly random is subtracted.

This method can be applied to any bridge graph, which allows us to compare the characteristics of Locomotiva and BBO Fans. Additionally, we can use expert knowledge regarding Locomotiva to validate algorithmic findings; we do not have such information for BBO Fans. Thus, we analyze our community data in two steps. We first analyze the data taken from Locomotiva for different play relationship criteria (combinations of values and parameters P and S). Then, we use the combination of parameters validated by the Locomotiva experts to analyze the BBO Fans bridge club. Besides using a “ground truth”, this approach allows us to avoid the costly social networking analysis on the large-scale BBO Fans/BBO community.

4.3 Playing Style

In our method, the playing style investigation analyzes how players relate to their partners and with the other members in the club. Thus, we investigate the roles and functions of players as members of bridge-playing communities. As a refinement of the taxonomy introduced in our previous work [15], we define four types of bridge players based on the amount and intensity of playing relationships: the community builder, the community member, the random player, and the faithful player.

The *community builder* is very active, playing a large number of hands with a large number of players. Community builders are a small but valuable category, as they help maintaining and growing the community. This type can be identified as having a large connectivity degree, even for large values of P (see Section 4.2).

The *community member* has a moderate number of relations in the community. He usually plays with friends and/or with players of comparable skill. To retain such players, the community needs to be structured according to their preferences; this explains why many online bridge clubs are skill-based or region-based, or even friends-only. Skill-based communities bring together players with similar skill, but sometimes adopt weaker players and help them evolve, or are visited by stronger players. Similarly, region-based communities gather people who can speak the same language (often not English).

Last, the *random player* enjoys to play bridge but he does not have a stable partner and is not part of a community, and the *faithful player* has at most two stable partners. Although not active in the community, faithful players are probably the most active players.

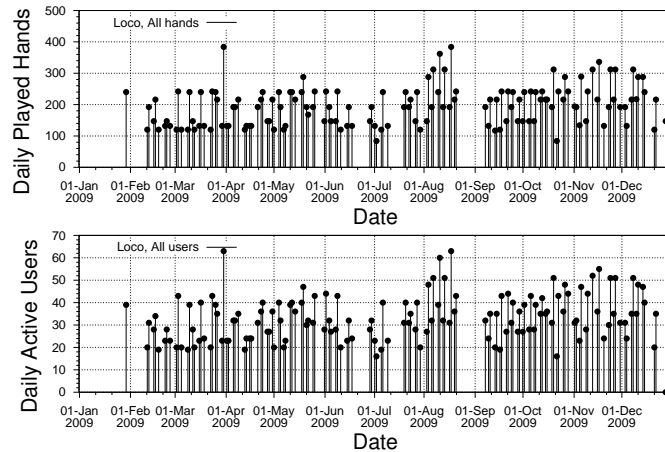


Figure 1: Daily number of (top) played hands; and (bottom) players for Locomotiva. For the top graph, bars of equal height, e.g., vertical axis value of 120, correspond to specific tournament sizes.

5 Analysis Results

In this section we present an analysis of the Locomotiva and BBO Fans datasets (see Section 3).

5.1 Activity Levels

We use the method introduced in Section 4.1 to analyze the activity levels of Locomotiva and BBO Fans.

Daily activity. We have analyzed the number of players and hands over time for BBO and BBO Fans in our previous work [15]. Our main finding was the presence of a steady daily activity in the BBO Fans community, and similar levels of activity with similarly-sized games on FaceBook. We have repeated the process with the Locomotiva dataset, and depicted the results in Figure 1. We find a relatively stable number of played hands, with few specific tournament sizes, see Figure 1(bottom). We also find a much less stable number of players, which is mainly explained by the different tournament formats, by the overlap between club and national or international tournaments (especially on Fridays), and by holiday and vacation periods.

The face to face community exhibits much more variation in number of played hands than the online community. We next look at the weekly number of played hands. Figure 2 depicts the weekly number of played hands for Locomotiva, for BBO, and for BBO Fans. The number of weekly hands fluctuates strongly for Locomotiva, but is relatively stable for BBO and BBO Fans. For Locomotiva, the smallest number of hands played in any one week (observed for week 53 of 2009) is an order of magnitude smaller than the peak (week 33).

The face to face bridge community exhibits many player joins over the course of the year; the online community is relatively closed. The joining of new players is another time-varying community characteristic. We expect to find a “first-sample” effect, where all the players observed in the first dataset sample are identified as new. Beyond the first sample, we expect the number of new players to fluctuate over time for an open, changing community, and to converge quickly to zero for a closed community. Figure 2 depicts the weekly number of new players observed for Locomotiva, for BBO, and for BBO Fans. We see that Locomotiva is not a closed community; over 80% (65%) of its players join after the initial week (three weeks), with a fluctuating pattern over the course of the year. While we do not have enough data for BBO and BBO Fans, the data we have indicate a closed community trend; for BBO Fans, less than 15% of its players join after the initial week.

The network traffic per client is low, with small and infrequent packets. We investigate the network traffic per client by carrying out play sessions on BBO using the standard game client provided by the platform; we use Wireshark to record the traffic on an otherwise quiet network. Figure 3 depicts the

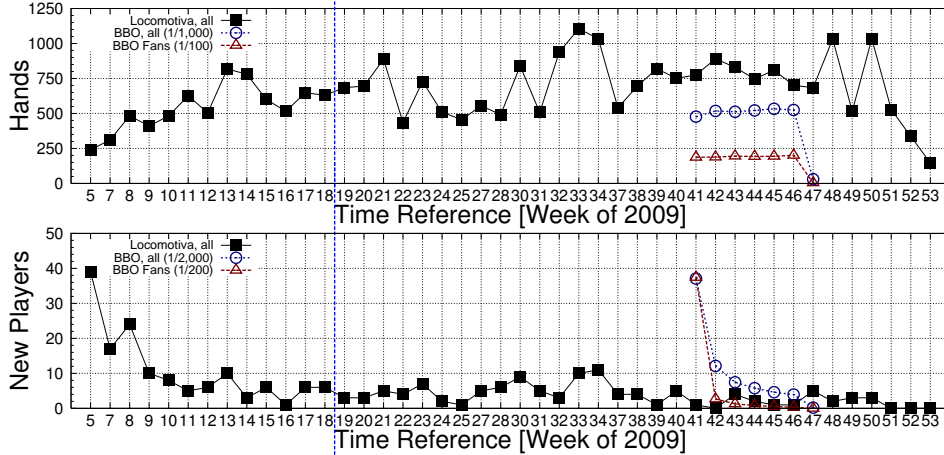


Figure 2: Weekly number of (top) played hands; and (bottom) new player joins. Data for Locomotiva (filled squares), BBO (circles), and BBO Fans (triangles). Values for BBO (BBO Fans) scaled down by a factor of 2,000 (200). The BBO and BBO Fans measurements lead to incomplete data; the last point on their respective curves can be discarded. The horizontal axis is discontinuous at the beginning of 2009, when Locomotiva is closed.

combined inbound and outbound traffic observed during a typical play session of $2\frac{1}{2}$ hours. Except for a peak at the very start of the session, when the client is updating, the traffic characteristics are relatively stable when aggregated over 1-minute intervals. The bandwidth for this session is about 20,000 bytes/minute, or 2.4 kilo-bits per second (kbps). The number of packets increases slightly over the course of the session, from 60 to 100 packets per minute; the average is 1.2 packets per second (pps). In comparison, the average client traffic is of 5-8 kbps and 5 pps for a popular MMO Role Playing Game [1], of 40 kbps and 20-50 pps for several popular First-Person Shooters [4], and of 775 kbps and up to 40 packets per second for a popular virtual world [7]. The small traffic requirements indicate that bridge platforms do not raise significant quality of service challenges in comparison to these online applications.

5.2 Community Structure

Following the method introduced in Section 4.2, we have first extracted the communities present in Locomotiva using a greedy algorithm [2]. We have only used combinations of cooperative play aspects (P_+ and S_+), as adversaries are randomly assigned in most Locomotiva competitions. Table 2 summarizes the main community characteristics observed for Locomotiva for various play relationships. The results obtained with the multi-aspect criterion are identical with the results obtained when using the single criterion $P_+ \geq$. We explain this through the regular structure of the tournaments (sessions) played at Locomotiva (see also Section 4.1); since players rarely leave a tournament, and the number of hands played by each player during each tournament is intended to be stable (20–25 hands), S and P are correlated for Locomotiva.

The communities obtained were manually examined by two independent experts: one of the organizers of the Locomotiva tournaments and a regular member of the club. To help the experts better identify the communities produced by the algorithm, we have provided a visualization of each community, an example of which is shown in Figure 4. For each combination of values of the play relationship criterion’s parameters the resulting communities were examined by the experts, who used the following criteria: (i) are there regular partners in the same community? (ii) are there persons who play frequently together in the same community? (iii) are there persons who are known to be friends or in a close relationship in the same community? (iv) are there persons who cannot stand each other in the same community? Each community for which the answer was yes for criteria (i)–(iii) scored 1 point; each community for which the answer was yes for criterion (iv) scored -1 point. We have tallied the results and concluded that the best criterion extracting communities

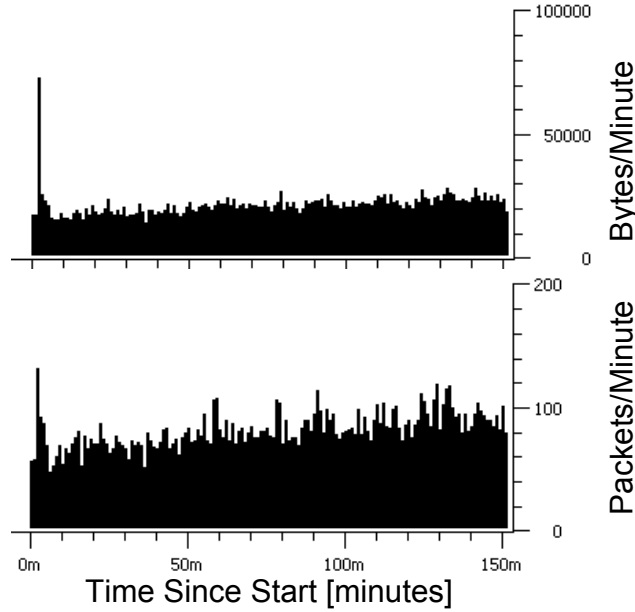


Figure 3: Session network traffic. (top) Bytes per minute; (bottom) Packets per minute.

Table 2: Community structure characteristics for Locomotiva. N is the number of non-isolated nodes; NC is the number of communities; CS is the mean Community Size; Q is the maximum Modularity.

Single-aspect	N	NC	CS	Q
$P_+ \geq 20$	249	35	7.11	0.22
$P_+ \geq 40$	170	35	4.85	0.29
$P_+ \geq 60$	138	29	4.75	0.30
$P_+ \geq 80$	119	27	4.40	0.34
$P_+ \geq 100$	109	28	3.89	0.36
$P_+ \geq 120$	104	30	3.46	0.40
$P_+ \geq 140$	100	30	3.33	0.41
$P_+ \geq 160$	94	28	3.35	0.41
$P_+ \geq 180$	88	29	3.03	0.41
$P_+ \geq 200$	87	30	3.90	0.43
$S_+ \geq 3$	138	29	4.75	0.30
$S_+ \geq 7$	100	30	3.33	0.41
$S_+ \geq 10$	83	30	2.76	0.43
Multi-aspect	N	NC	CS	Q
$(P_+ \geq 80) \text{ OR } (S_+ \geq 4)$	119	27	4.40	0.34
$(P_+ \geq 160) \text{ OR } (S_+ \geq 8)$	94	28	3.35	0.41
$(P_+ \geq 200) \text{ OR } (S_+ \geq 10)$	87	30	2.90	0.43

from the Locomotiva dataset is $(P_+ \geq 200) \text{ OR } (S_+ \geq 8)$. For these values of the S and P parameters, the modularity obtained is 0.43 (the value for $P_+ \geq 1$ is only 0.2), which also indicates a good community structure for the chosen parameters. The results corroborated with the low average community size show that the communities in face to face bridge are small, with most players having only one regular partner.

After obtaining a suitable play relationship criterion from the Locomotiva dataset, the following step was to normalize the values of the parameters S and P according to the time interval during which the data

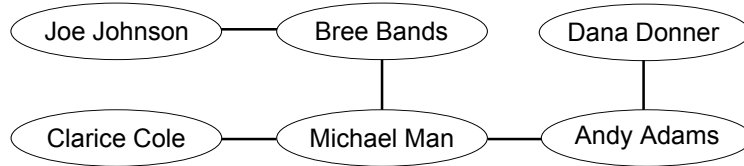


Figure 4: Partial Locomotiva graph showing one identified community (anonymized).

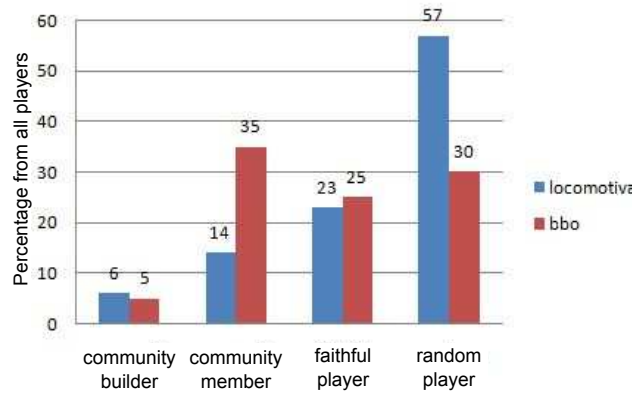


Figure 5: Percentage of players by player type for Locomotiva (left bars) and BBO Fans (right bars).

was gathered. The main reason is that both P and S are cumulative aspects. For Locomotiva, the data was gathered during a interval of $T^L = 50weeks$; for BBO Fans, $T^B = 5weeks$ (10 times shorter period). We have computed the BBO Fans communities using, i.e., $P_+^B = P_+^L \times \frac{T^B}{T^L} = 20hands$, obtaining 4,373 communities and a modularity is 0.43, which is the same maximum modularity obtained for Locomotiva. Over 90% of these communities have at most 4 players.

5.3 Playing Styles

We analyze in this section the gamer playing styles for the face to face and for the online community, using the play styles introduced in Section 4.3. The players from the Locomotiva community were classified by our two experts, together. The BBO Fans players were classified automatically, starting from the social graph computed and used in Section 5.2. The results for the two communities are summarized in Figure 5. The community builders and the faithful players represent the same percentage of the player base in both communities, about 5% and 25%, respectively. The percentage of random players in the community is high for both communities. We attribute this situation to many players finding it difficult to adjust to the rigors of a fixed tournament schedule. Perhaps surprisingly, there are significantly more random players in the face to face bridge club than in the online club (57% and 30%, respectively). We attribute this discrepancy to the additional requirement of physical presence raised by Locomotiva, and to the relative ease of becoming a community member through the means of a round-the-clock, online platform such as BBO.

6 Related Work

The analysis of (large-scale) social networks has spurred numerous studies over the past three decades [6, 16, 10, 9, 8, 13, 5, 12]. In contrast with these studies, our work focuses on bridge, which is a complex online social game with a large player base. Our work also investigates a novel way to extract social relationships from game sessions, and compares an online with a face to face community.

The analysis of large-scale online social networks is closest to our work. We have already pointed out throughout the article the main contributions of this work in comparison with our own related work [15]. Our study investigates a *complex* online social game, which distinguishes it from the body of research inves-

tigating the social networks such as FaceBook and Flickr [10, 11], the instant messaging network Microsoft Messenger [9], the online game World of Warcraft [3], and the online casual game Fighters Club [12].

7 Conclusion and Ongoing Work

Online social gaming, a new Internet application with millions of active users, poses new challenges in understanding online communities. In this work we have investigated the user behavior, social networking, and playing style characteristics of online bridge communities, with three main contributions. First, we have collected data from two large bridge communities, the face to face community Locomotiva and the online community BBO Fans. Second, we have presented a method for analyzing online social gaming communities. Notably, we have introduced a formalism for social connectivity to support our method's novel approach of detecting social relationships when only bridge play relationships are known. Third, we have demonstrated the use of our proposed method in practice using the two collected datasets. Our comparative analysis revealed similar patterns in the two observed communities, but more variation and a significantly higher number of players that are not attached in the community (random players) for the face to face community Locomotiva. We have validated our algorithmic findings using the advice of experts from the Locomotiva community.

We are currently investigating new criteria for player classification according to our proposed taxonomy, and gathering data to perform a more in-depth analysis of the BBO Fans club and its underlying gaming platform. For the future, we plan to investigate ways to improve the BBO gameplay experience, and to compare online bridge communities to communities organized around other social games.

References

- [1] K.-T. Chen, P. Huang, and C.-L. Lei. Game traffic analysis: An mmorpg perspective. *Computer Networks*, 50(16):3002–3023, 2006. [4](#), [6](#), [9](#)
- [2] A. Clauset, M. E. J. Newman, and C. Moore. Finding community structure in very large networks. *Phys. Rev.*, E70:1–6, 2004. [7](#), [9](#)
- [3] N. Ducheneaut, N. Yee, E. Nickell, and R. J. Moore. The life and death of online gaming communities. In *CHI*, page 839, 2007. [4](#), [12](#)
- [4] W. Feng, F. Chang, W. Feng, and J. Walpole. A traffic characterization of popular on-line games. *IEEE/ACM Trans. Netw.*, 13(3):488–500, 2005. [4](#), [6](#), [9](#)
- [5] M. Girvan and M. E. J. Newman. Community structure in social and biological networks. *Proc. Natl. Acad. Sci., USA*, 99:7821–6, June 2002. [4](#), [11](#)
- [6] M. Granovetter. The Strength of Weak Ties: A Network Theory Revisited. *Sociol. Th.*, 1:201, 1983. [4](#), [7](#), [11](#)
- [7] J. Kinicki and M. Claypool. Traffic analysis of avatars in second life. In *NOSSDAV*, pages 69–74, New York, NY, USA, 2008. ACM. [6](#), [9](#)
- [8] J. M. Kleinberg. The convergence of social and technological networks. *CACM*, 51(11):66–72, 2008. [11](#)
- [9] J. Leskovec and E. Horvitz. Planetary-scale views on a large instant-messaging network. In *WWW*, pages 915–924, 2008. [4](#), [11](#), [12](#)
- [10] J. Leskovec, K. J. Lang, A. Dasgupta, and M. W. Mahoney. Statistical properties of community structure in large social and information networks. In *WWW*, pages 695–704, 2008. [4](#), [11](#), [12](#)
- [11] A. Mislove, M. Marcon, K. P. Gummadi, P. Druschel, and B. Bhattacharjee. Measurement and analysis of online social networks. In *IMC*, page 29, 2007. [12](#)
- [12] A. Nazir, S. Raza, and C.-N. Chuah. Unveiling FaceBook: a measurement study of social network based applications. In *IMC*, pages 43–56, 2008. [4](#), [6](#), [11](#), [12](#)
- [13] M. E. J. Newman. Detecting community structure in networks. *The European Physical Journal B*, 38, 2004. [4](#), [11](#)
- [14] M. E. J. Newman. Modularity and community structure in networks. *Proc. Natl. Acad. Sci., USA*, 103:8577–82, 2006. [4](#)
- [15] V. Posea, M. Balint, A. Dimitriu, and A. Iosup. An analysis of the bbo fans online social gaming community. In *RoEduNet*, pages 1–6. IEEE, 2010. [4](#), [6](#), [7](#), [8](#), [11](#)
- [16] D. J. Watts and S. H. Strogatz. Collective dynamics of small-world networks. *Nature*, 393(6684):440–2, 1998. [7](#), [11](#)